



# air420i<sup>®</sup> 4G Industrial Router



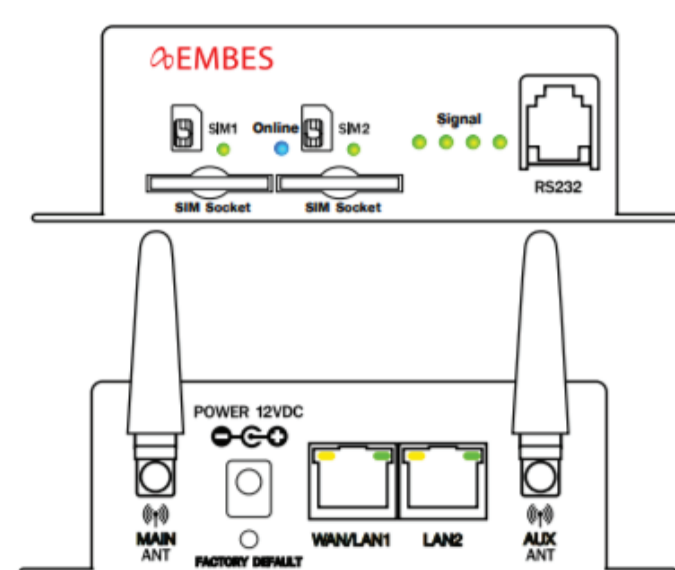
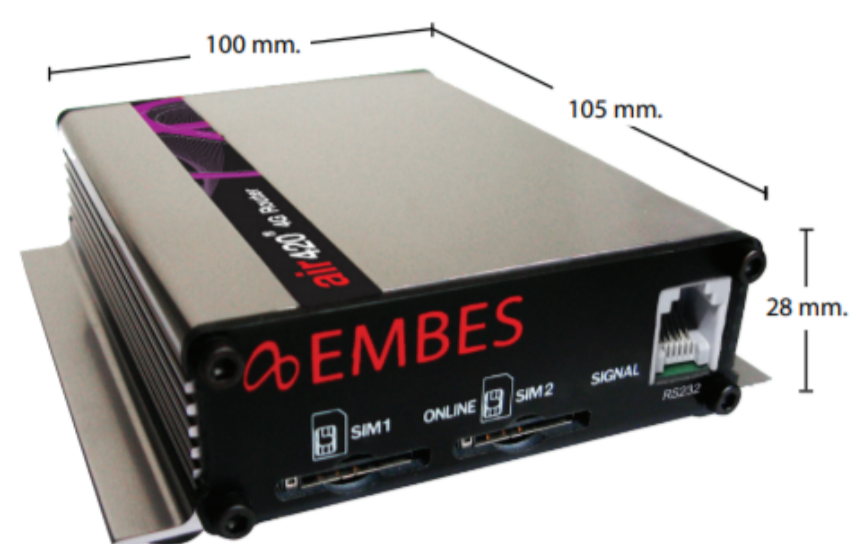
# air440i<sup>®</sup>

## Hardware Feature

- MIPS Processor MIPS24KEc 580 MHz
- 16 MB Flash and 128 MB Ram
- 1 WAN and 1 LAN Ethernet 10/100 or 2 LAN Ethernet 10/100 (Configurable)
- 2 Push SIM Socket WWAN Cellular Dual SIM Active/Stand-by
- 1 Console Port
- LED Status (Wan Status, SIM Status, Signal Strength)
- Hardware Monitoring (Temperature, Volt-in, Volt-out)
- Real Time Clock & Hardware Watchdog
- 50 Ohm Dual SMA Connector for WWAN Cellular 3G/4G
- Standard Antenna 2 dBi gain (optional : High Gain Dipole 14 dBi)
- Operation Temperature -25C to +70C
- Real Power Consumption 3.6 Watt
- AC Adapter 12V 1A
- Dimension (WxDxH) 105x100x28 mm.
- Weight 300 g.

## Wireless Carrier Specification and Certification

- 4G
  - LTE - LTE FDD : 800/850/900/1800/2100/2600 MHz
  - LTE TDD : 2300/2500/2600 MHz
  - FDD DL up to 150 Mbps, UL up to 50 Mbps
  - TDD DL up to 130 Mbps, UL up to 35 Mbps
- 3G
  - UMTS(WCDMA) 850/900/2100 MHz
  - HSPA+ DL CAT24 / UL CAT6, Dual Carrier
  - DL up to 42 Mbps, UL up to 5.76 Mbps
- 2G
  - Dual Band 900/1800 MHz
  - EDGE DL and UP up to 236.8 Kbps

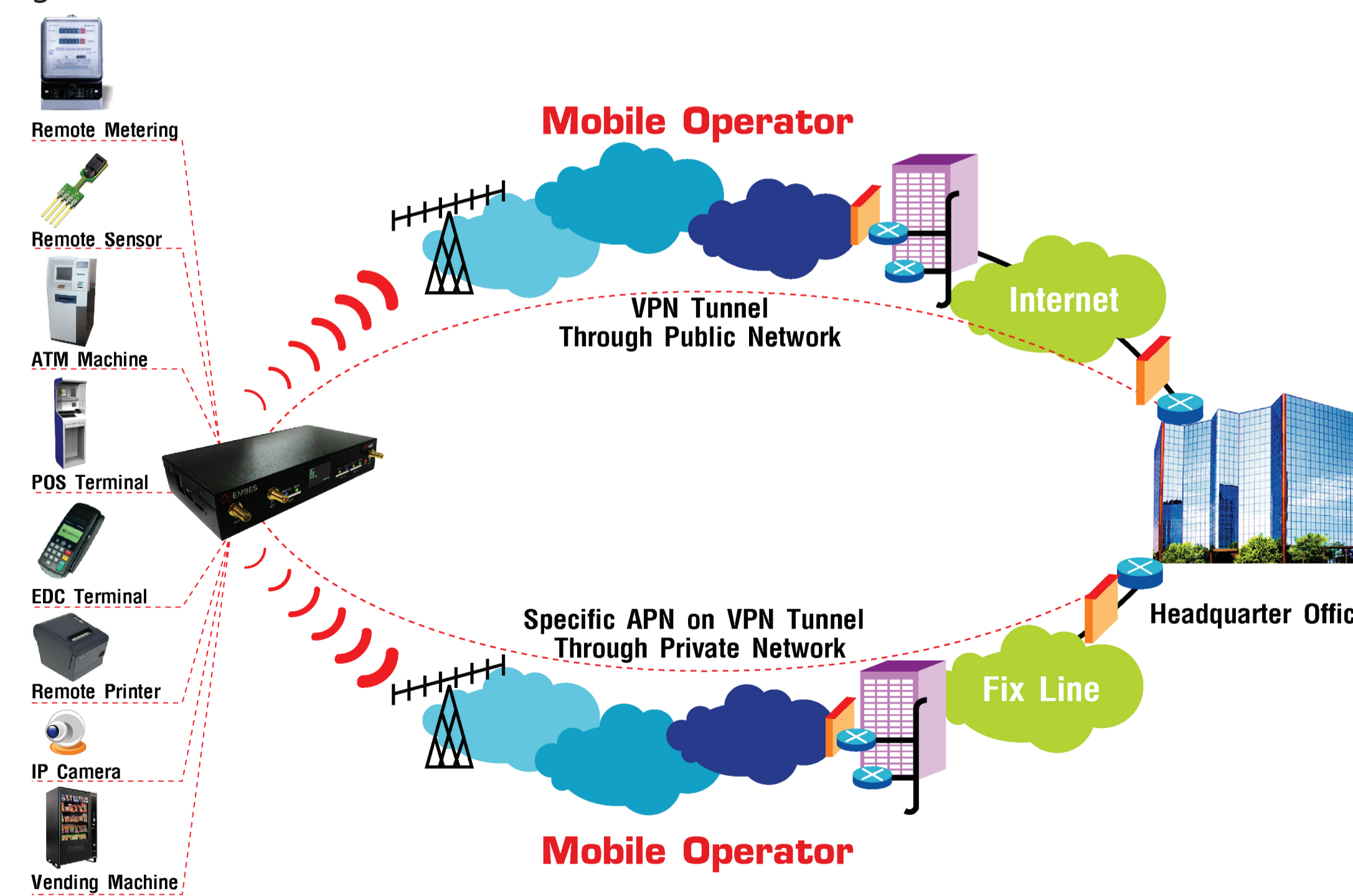


## Software Feature and Protocols Supported

- IP V4/V6 dual stack
- NAT Static and Dynamic
- Port Forwarding Protocol UPnP and NAT-PMP
- Dynamic Routing : VPN pass-through, RIPv2, OSPF and BGP
- Tunnel : IPSec with IKEv1/v2, IPIP, PPTP, OpenVPN, GRE (10 Tunnel Included), GRE Keepalive, L2TP Compression
- IPSec Encryption : AES and 3DES
- Cryptology : SHA-256, SHA-1, MD5
- Firewall : IP allow/deny/drop, Port Selection
- SNMP V1, V2
- Dynamic DNS, DHCP
- VLAN
- Quality of Service (QoS)
- Automatic WAN Switching for Link Backup
- Wireless Distribution System (WDS) including : WPA-PSK, WPA2-PSK, WPA-PSK/WPA2-PSK Mixed Mode (optional)
- Wifi Content Filtering (optional)
- Temperature and Voltage Monitoring

## Management and Configuration

- SNMP V1, V2
- Web Interface and CLI using SSH/Console
- SMS Reset
- iManagement



## Hardware Feature

- MIPS Processor MIPS24KEc 580 MHz
- 16 MB Flash and 128 MB Ram
- 1 WAN and 3 LAN Ethernet 10/100 or 4 LAN Ethernet 10/100 (Configurable)
- 1 USB 2.0 Port
- 2 Push SIM Socket WWAN Cellular Dual SIM Active/Stand-by
- 1 Console Port
- 1 SD Card
- LED Status (Wan Status, SIM Status, Signal Strength, Wifi Status)
- OLED Display
- Hardware Monitoring (Temperature, Volt-in, Volt-out, Volt Battery)
- OLED Display
- Hardware Monitoring (Temperature, Volt-in, Volt-out, Volt Battery)
- Battery Backup 3.6V 5000mAh (optional)
- 300 Mbps Wifi 802.11n, 2.4 GHz, 2T2R for AP/ Client/Bridge/Repeater (optional)
- Real Time Clock & Hardware Watchdog

## Management and Configuration

- SNMP V1, V2
- Web Interface and CLI using SSH/Console
- SMS Reset
- iManagement

## Software Feature and Protocols Supported

- IP V4/V6 dual stack
- NAT Static and Dynamic
- Port Forwarding Protocol UPnP and NAT-PMP
- Dynamic Routing : VPN pass-through, RIPv2, OSPF and BGP
- Tunnel : IPSec with IKEv1/v2, IPIP, PPTP, OpenVPN, GRE (10 Tunnel Included), GRE Keepalive, L2TP Compression
- IPSec Encryption : AES and 3DES
- Cryptology : SHA-256, SHA-1, MD5
- Firewall : IP allow/deny /drop, Port Selection
- SNMP V1, V2
- Dynamic DNS, DHCP
- VLAN
- Quality of Service (QoS)
- Automatic WAN Switching for Link Backup
- Wireless Distribution System (WDS) including : WPA-PSK, WPA2-PSK, WPA-PSK/WPA2-PSK Mixed Mode (optional)
- Wifi Content Filtering (optional)
- Temperature and Voltage Monitoring
- GPS Location Service (optional for GPS antenna)

## Wireless Carrier Specification and Certification

- 4G LTE
  - LTE FDD : 800/850/900/1800/2100/2600 MHz
  - LTE TDD : 2300/2500/2600 MHz
  - FDD DL up to 150 Mbps, UL up to 50 Mbps
  - TDD DL up to 130 Mbps, UL up to 35 Mbps
- 3G
  - UMTS(WCDMA) 850/900/2100 MHz
  - HSPA+ DL CAT24 / UL CAT6, Dual Carrier
  - DL up to 42 Mbps, UL up to 5.76 Mbps
- 2G
  - Dual Band 900/1800 MHz
  - EDGE DL and UP up to 236.8 Kbps
  - GPRS DL and UP up to 85.6 Kbps

